

# St Hilary West Circular Walk

6.4 miles – 2.1 hours – Moderate – 3 pub stops

## Overview

Great views over the Vale, followed by peaceful meadow lands, unseen parts of Cowbridge and Llanblethian then a peek at St Quentin's Castle – finishing with a gorgeous walk through the Vale back to the Bush Inn – and a well earned pint

## Distance

6.4 miles

## Time

2.1 hours (brisk pace without stops)

## Route

St Hilary – St Hilary Down – Stalling Down – Aberthin – Cowbridge – Llanblethian – New Beaupre – St Hilary

## Pub stops

Start and Finish: Bush Inn  
Aberthin: Farmers & Hare and Hounds  
Cowbridge: several

## Terrain

All well marked paths  
Gentle uphill at start and finish  
Minor boggy factor if very wet

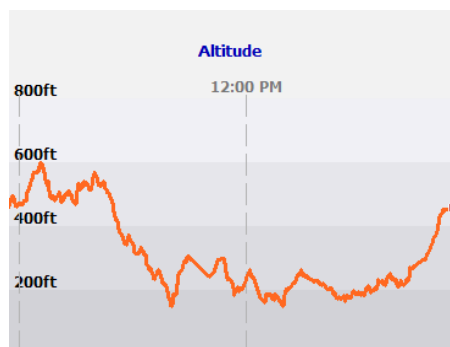
## Map

Explorer 151  
1: 25,000

Start and finish  
grid reference:  
ST 016733

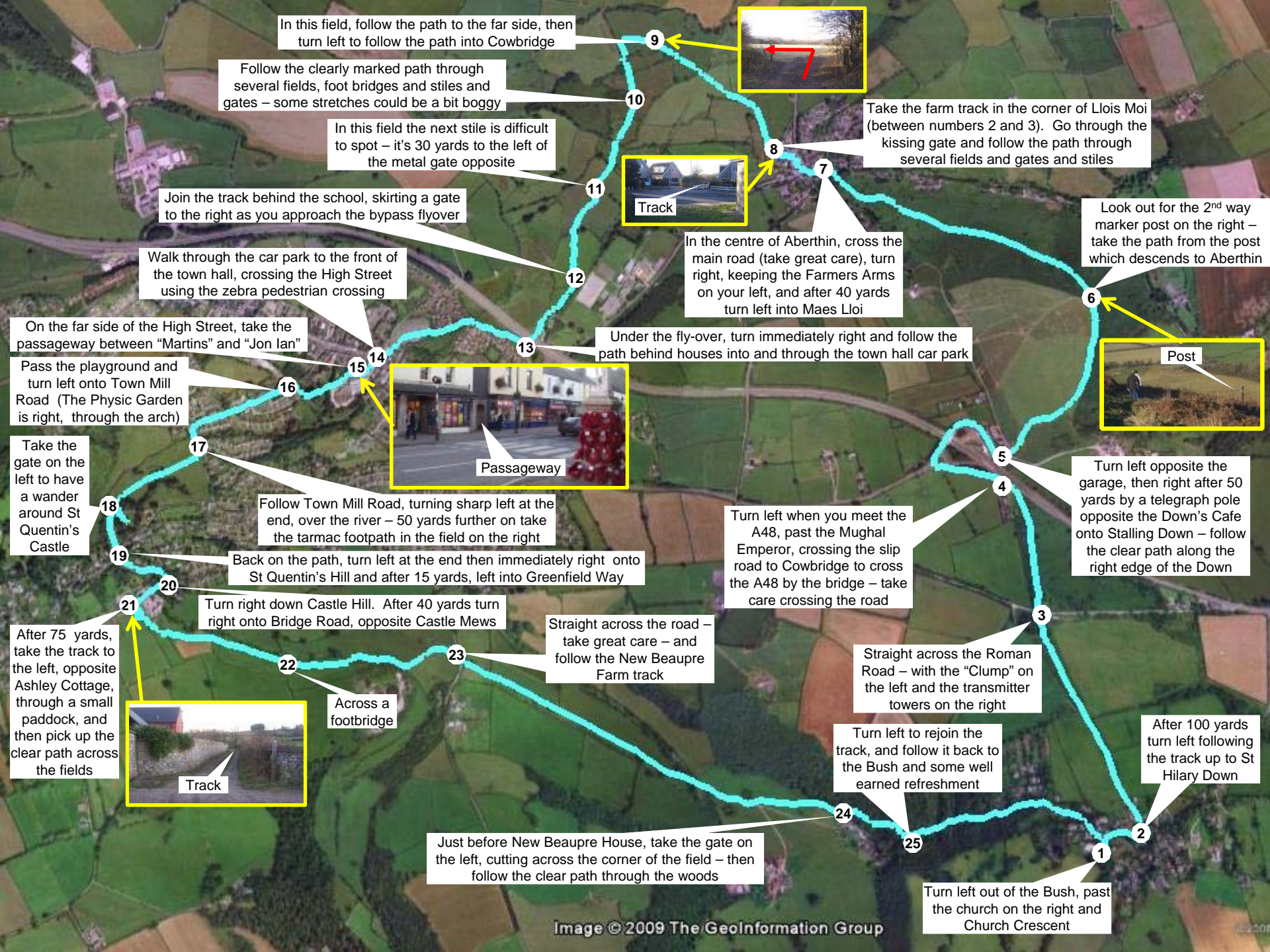


## Height Gain and Altitude



Start and finish: 420 feet  
Highest point: 601 feet  
Lowest point: 178 feet

About 400 feet between highest and lowest points  
About 500 feet height gain in total



In this field, follow the path to the far side, then turn left to follow the path into Cowbridge



Follow the clearly marked path through several fields, foot bridges and stiles and gates – some stretches could be a bit boggy

In this field the next stile is difficult to spot – it's 30 yards to the left of the metal gate opposite



Take the farm track in the corner of Llois Moi (between numbers 2 and 3). Go through the kissing gate and follow the path through several fields and gates and stiles

Join the track behind the school, skirting a gate to the right as you approach the bypass flyover

In the centre of Aberthin, cross the main road (take great care), turn right, keeping the Farmers Arms on your left, and after 40 yards turn left into Maes Lloi

Look out for the 2<sup>nd</sup> way marker post on the right – take the path from the post which descends to Aberthin



Walk through the car park to the front of the town hall, crossing the High Street using the zebra pedestrian crossing

Under the fly-over, turn immediately right and follow the path behind houses into and through the town hall car park

On the far side of the High Street, take the passageway between "Martins" and "Jon Ian"



Pass the playground and turn left onto Town Mill Road (The Physic Garden is right, through the arch)

Take the gate on the left to have a wander around St Quentin's Castle

Follow Town Mill Road, turning sharp left at the end, over the river – 50 yards further on take the tarmac footpath in the field on the right

Turn left when you meet the A48, past the Mughal Emperor, crossing the slip road to Cowbridge to cross the A48 by the bridge – take care crossing the road

Turn left opposite the garage, then right after 50 yards by a telegraph pole opposite the Down's Cafe onto Stalling Down – follow the clear path along the right edge of the Down

Back on the path, turn left at the end then immediately right onto St Quentin's Hill and after 15 yards, left into Greenfield Way

Turn right down Castle Hill. After 40 yards turn right onto Bridge Road, opposite Castle Mews

Straight across the road – take great care – and follow the New Beaupre Farm track

Straight across the Roman Road – with the "Clump" on the left and the transmitter towers on the right

After 75 yards, take the track to the left, opposite Ashley Cottage, through a small paddock, and then pick up the clear path across the fields



Across a footbridge

Turn left to rejoin the track, and follow it back to the Bush and some well earned refreshment

After 100 yards turn left following the track up to St Hilary Down

Just before New Beaupre House, take the gate on the left, cutting across the corner of the field – then follow the clear path through the woods

Turn left out of the Bush, past the church on the right and Church Crescent

# Circular and Other Walks in and around St Hilary

This is one in a series of current and planned walking guides based on and around St Hilary

## The Walks

### Circular Walks

West – 6 miles  
Aberthin / Cowbridge / Llanblethian

South East  
Treguff / Llantrithyd

North West  
Llansannor / Penllyn / Cowbridge

South West  
Llanblethian / Siginstone / Llandough

North East  
Llantrithyd / Hensol / Stalling Down

The Downs

### Routes between St Hilary and Cowbridge

via New Beaupre

via Roman Road

via The Downs

via Llanbleddian

### Points of Interest

Old Beaupre Castle

Coed Hills Rural Art Space

The Clump

Disclaimer: you undertake these walks at your own risk

Web site: All these walks will be available, as they are prepared, as a download from the St Hilary website: [www.sthilary.org.uk](http://www.sthilary.org.uk) ⇒ local walks and maps

The best map for these walks is the Ordnance Survey's Explorer 151

Boots are advisable for these walks

Take great care when crossing roads and on the lanes